

BPWTN ACHIEVER

Business and Professional Women of Tennessee

January 2023 Issue 7



2023
HAPPY NEW YEAR

Inside this Issue:

Cover Happy Holidays

Page 2 Martha's Message

Page 3 IB reconvenes

Page 4 Ted Talks/You Tubes

Page 5 Gift a BPW Membership

Page 6-7 BPW Benefits

Page 8 2022-23 Membership Awards

Page 9 Tools for Membership
Growth

Page 10 Important Dates

A Publication of the Business and Professional Women of Tennessee

Martha's Message

Season Greetings to all BPW/TN members and friends! I hope you to enjoy your holidays with your family and friends. Plus, stay safe during any travels.



Our fall Pampered Chef fundraiser was a success. Our sales were over \$1000 dollars. With that and bookings from participants our total received from the event is \$162.75. As stated for the event, this money goes toward our 2023 convention event.

The fundraising committee is reviewing additional options for raising money to support the 2023 convention event. Since most of our meetings have been online these past 2+ years, opportunities for raising funds has been very limited. So we are looking for new ideas to help fund organizational events. If you have any suggestions, please email Amber Farley at fundraising@bpwtn.org or me at president@bpwtn.org.

Speaking of convention... We have secured the Hampton Inn in Mt. Juliet to hold the 2023 convention. As stated before, we need to have an in person meeting this year for convention for officer installation and passing the gavel to a new president. Plus, it will be a good opportunity to gather and network once again! I hope to see some familiar faces and would love to see new faces.

I sincerely hope everyone has a safe and joyful holiday season!

At any time you need to contact me, please feel free to drop me an email at president@bpwtn.org or give me a call at (901) 489-5481

I look forward to having another great year and hearing from you!

For more information visit

BPWTN.org

also

Check us out on Facebook

***Business and
Professional Women
of Tennessee***

Link is <https://www.facebook.com/BPWTN>



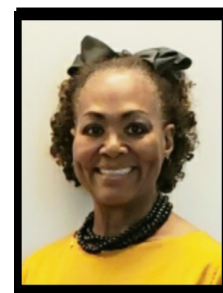
**Letter
from the
Editor**

I hope everyone has enjoyed receiving the Achiever. It has definitely been a great way to keep up with BPW activities and see what was going on across the state.

Please send your articles for the Achiever by the 20th of each month for the next months issue. Have a Happy New Year.

If you have any questions, please contact me via email or text any time.

Thank you, Sharon Taylor-Carrillo
Past State President 2007-08, 2017-18
Achiever Editor 2021-2023
615-319-6531





Reconvene Interim Board Meeting

**I
B

R
E
C
O
N
V
E
N
E
S**

Time: Jan 17, 2023 06:00 PM Central Time (US Canada)

Join Zoom & Meeting

[https://us06web.zoom.us/j/88975175808?](https://us06web.zoom.us/j/88975175808?pwd=RlFjVWJRViszejB3anh2SDhZbzhNQQT09)

[pwd=RlFjVWJRViszejB3anh2SDhZbzhNQQT09](https://us06web.zoom.us/j/88975175808?pwd=RlFjVWJRViszejB3anh2SDhZbzhNQQT09)

Meeting ID: 889 7517 5808

Passcode: 839523

One tap mobile

+13017158592,,88975175808#,,,*839523# US (Washington DC)

+13052241968,,88975175808#,,,*839523# US

Dial by your location

+1 301 715 8592 US

(Washington DC)

+1 305 224 1968 US

+1 309 205 3325 US

+1 312 626 6799 US (Chicago)

+1 646 931 3860 US

+1 929 205 6099 US (New York)

+1 689 278 1000 US

+1 719 359 4580 US

+1 253 205 0468 US

+1 253 215 8782 US (Tacoma)

+1 346 248 7799 US (Houston)

+1 360 209 5623 US

+1 386 347 5053 US

+1 507 473 4847 US

+1 564 217 2000 US

+1 669 444 9171 US

+1 669 900 6833 US (San Jose)

Meeting ID: 889 7517 5808

Passcode: 839523

Ted Talks/YouTubes

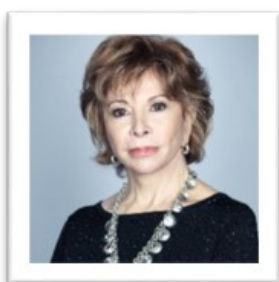
Let's end ageism with Ashton Applewhite



It's not the passage of time that makes it so hard to get older. It's ageism, a prejudice that pits us against our future selves -- and each other. Ashton Applewhite urges us to dismantle the dread and mobilize against the last socially acceptable prejudice. "Aging is not a problem to be fixed or a disease to be cured," she says. "It is a natural, powerful, lifelong process that unites us all."

Url: https://www.ted.com/talks/ashton_applewhite_let_s_end_ageism?utm_campaign=tedsread&utm_medium=referral&utm_source=tedcomshare

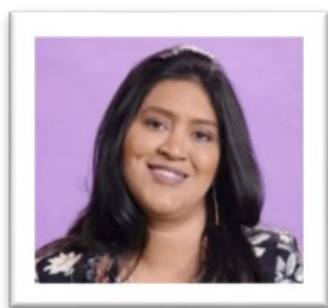
How to live passionately—no matter your age with Isabel Allende



Author Isabel Allende is 71. Yes, she has a few wrinkles—but she has incredible perspective too. In this candid talk, meant for viewers of all ages, she talks about her fears as she gets older and shares how she plans to keep on living passionately.

Url: https://www.ted.com/talks/isabel_allende_how_to_live_passionately_no_matter_your_age?utm_campaign=tedsread&utm_medium=referral&utm_source=tedcomshare

How to understand and be understood with Dr. Ruchi Sinha



Dr. Ruchi Sinha has spent 10 years studying psychology, and another decade publishing and teaching how we relate to and understand others. As a human, the one thing that fascinates us are other humans. We want to understand them, be able to tell stories about who they are, and we have a need to be understood. Dr. Ruchi Sinha is an Organizational Psychologist who loves to research and teach Negotiation Skills. She is passionate about integrating knowledge from multiple disciplines especially psychology, management, sociology and philosophy to better understand how humans relate with others at work. She loves learning about and, sharing of ideas that have the potential to change the lens through which we view this world

Url: https://www.ted.com/talks/ruchi_sinha_how_to_understand_and_be_understood?utm_campaign=tedsread&utm_medium=referral&utm_source=tedcomshare



Gift a BPW MEMBERSHIP!

**Have you ever
considered giving a gift
of a BPW membership?**

Why is membership in BPW the best gift ever:

- It's a gift of knowledge, advocacy and connections.
- Membership in BPW can change a young woman's life as she moves into her career choices.
- It can be a wonderful gift for an older friend who may feel isolated or losing touch with technology.
- Think BPW for Women on the Move. Do you know a woman (nail salons, house-keepers) who might benefit from honing their business skills or connecting with other small business owners?
- Do you have a college student in your circle? A Student membership will offer connections across the state, even across the US.

Although Christmas has come and gone, you can still give a BPW membership as a Birthday, a graduation, a congratulations gift or just because.

Member of a Local Organization

Membership is open to all individuals who share our goals.

Student Member

Student membership is open to individuals enrolled in a college or a university, or any other accredited educational institution above the high school level.

Member-At-Large

If you don't have a "home base", BPW/TN offers a Member-At-Large category so that you can take advantage of the benefits of membership that best suit your needs and circumstances.

A Member-At-Large is not affiliated with a local organization, paying only state dues directly to BPW/TN, with voting rights only at the state level.

Dual Membership

Members may hold dual local organization memberships &/or dual state memberships.

A member in good standing may request transfer from one local organization to another. To remain in good standing, a member's dues must be current.

All categories of membership include a subscription to the *Achiever*, the official publication of BPW/TN, by e-mail or postal for those without e-mail access.

Join the Premier Nonpartisan, Grassroots Organization for Working Women!

Membership in BPW is open to all women and men who share our goals:

- Equal Pay
- Ratifying the Equal Rights Amendment
 - A Family Friendly Workplace
- Advocating for the needs of workingwomen



BPWTN Dues for members shall be:

(a) ***Member Affiliated with a Local Organization.***

Each member affiliated with a Local Organization shall pay state **dues of \$50** and local dues as specified in the current local bylaws.

(b) ***Student Member Affiliated with a Local Organization***

Each student member affiliated with a local organization shall pay state **dues of \$15** and local dues as specified in the current local bylaws.

(c) ***Senior Member Affiliated with a Local Organization***

Each senior member affiliated with a local organization age 65 and older may elect to pay **state dues of \$40** and local dues as specified in the current local bylaws.

(d) ***Member at Large***

Each member (not affiliated with a local organization) shall pay **state dues of \$50.**

(e) ***Senior Members at Large***

Each senior member (not affiliated with a local organization) age 65 & older shall pay **state dues of \$40**

Included in the state dues allocation is a subscription to the official state publication.

Benefits of Membership

Advocacy

BPW Foundation is headquartered in the Washington, DC metro area for a reason... to provide members effective national representation on issues critical to workingwomen. Stay informed and participate in the process through the Advocacy section of the BPW Foundation website, www.bpwfoundation.org. Learn how to be a successful advocate and lobby your representatives at the annual Policy & Action conference. Keep the workingwoman's agenda – equal pay, work-life balance, better child and elder care, strong social security pension programs and workplace equity – at the forefront. Through BPW/TN membership and its affiliation with BPW Foundation you have a powerful voice on small business issues, with corporations and on Capitol Hill, without doing all the leg-work yourself

Education/Career Enhancement

Participate in BPW Foundation programs that are specifically designed to provide personal and professional development, growth and opportunities. Through seminars, hands-on workshops and noted experts, BPW members are given a vast array of opportunities to gain the skills they need to succeed and be successful.

The BPW/TN Individual Development program has provided numbers of women with leadership, negotiation, and professional skills necessary to reach their full potential.

The Young Careerist/Aspiring Leaders program gives a leg up to young women new to the work force but full of potential.

Information

Have quick access to relevant up-to-date information about topics essential for workingwomen such as the entrepreneur center via the BPW website. Members are also kept on top of developing issues and organization activities through the BPW Foundation Action Alerts and the BPW/TN state publication, the Achiever.

Leadership

Develop leadership skills at the Local and State levels with mentors to help you along the way. Maximize the career-boosting value of your BPW/TN goals or strengthen your existing skills. Become a recognized leader by getting involved in programs that benefit your community.

Visibility

Gain visibility and prominence in your community through involvement in BPW/TN events – locally, regionally, and statewide. Meetings, newsletters and websites provide opportunities to showcase and promote you and your business.

Helping Others

BPW has a proud tradition of “women helping women.” In 1956, the members of BPW/USA created the BPW Foundation to provide scholarships, research, information, and career development programs for workingwomen. Supporting the BPW Foundation allows you to help other women upgrade their skills or return to the workplace while furthering workplace equity and work-life balance. Since 1969, the BPW Foundation has awarded almost \$6 million in scholarships, research grants and loans. Involvement in the Individual Development, Young Careerist, and Mentoring programs allows you to aid in the personal and professional development of women while raising awareness of issues affecting working women.

Member Benefits

Gain access to special programs like the BPW Foundation Career Center to find a new job. Connect with other like-minded women through the websites associated with BPW Foundation and BPW/TN.

Friendships

Membership in BPW brings many rewards but the most lasting and meaningful are the lifelong friendships. Through participation in the many BPW activities and programs, you will form supportive friendships as well as important business relationships. There is nothing quite like the feeling you get in a roomful of powerful women all focused and energized on current issues and a common cause. Whether it is laughing together, working together, or lobbying together, BPW members know how to have fun and to get the job done!

Membership Awards for the 2022-23 BPW year

Membership Categories : Any state award presented using membership categories shall use the following categories as of April 30 of the previous year:

- *Local organizations with 10 members or fewer
- *Local organizations with 11-20 members
- *Local organizations with 21 or more member

Membership Outreach

The purpose of the membership outreach award is to promote BPW at non-BPW events within community.

Criteria: List the title and number of non-BPW events someone in your organization attended in 2022-2023 to speak about your BPW/TN local organization or about BPW/TN generally. Include any events where you left BPW brochures. Can include programs on college campuses, chamber events, or other social outings

Membership

Membership Awards are based on the current year's membership as of April 30 and compared to the April 30 membership of the previous year according to the state treasurer's records.

~~Membership Increase

~~Membership Retention

Membership Increase Award – *Highest percentage* of increase in number of members

Membership Retention Award – given to each local with a retention rate of 80% or more (certificate states retention rate.)

Iris Award - *Largest increase in number* of members

Certificate of Appreciation – locals with an increase in membership in membership categories.

Mildred Hearn Award - goes to the local with the largest retention in number of members.

Certificate of Appreciation goes to each local organizing and chartering a new local.

Top Recruiter Award – member who has recruited the highest number of verified new members as of April 30.

Tools to successfully growing your BPW's membership:

Development of Keys - Utilize every “tool” in your toolbox of recruitment items that you develop such as mailing lists from other organizations, brochures, business cards, banners, member applications, etc. Distribute literature to each member to make each of them an “assistant membership chair” and request they utilize these items to network and recruit.

Mentoring Development - Utilize a program to mentor other young women, sharing the experience and wisdom of your more seasoned members. It can be young BPW members just beginning their career, a group of school-age young women, or another group or organization. Have training, develop a schedule, and create subject material for participating mentors.

Potential Member Recruitment - Make visitors feel welcome, introduce everyone, distribute your programs, meeting schedule, and contact information. Have membership chair or someone to follow up via call, email, text, etc.

New Members - Assign a buddy to new members for six months. Make them feel an immediate part of the group by having an induction ceremony and presenting a certificate or pin. Orient them with a special session or a packet containing BPW history, symbols, etc. Make sure they are assigned to a committee according to their interest.

Current Members - Don't neglect your current members. Make sure everyone feels important to the organization and that they have an assigned responsibility. Follow up with absent members to let them know they were missed. Share news in newsletters or meetings, such as promotions, death in family, etc.

Lapsed Members - Send reminder letters or email for dues renewal. Find out why members choose not to renew and attempt to correct the problem if possible.



Use these helpful tools to grow your locals membership.

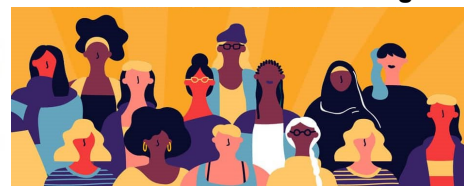
If you have any questions or need help please contact me.

SharonLyrae@aol.com

615-319-6531



Business and
Professional
Women/TN



2023 Calendar of Events

- 1/5/2023 Achiever Published Online and Mailed to Subscribers
- 1/17/2023 Interim Board meeting will reconvene
- 1/20/2023 Deadline for submission of material for the Achiever
- 2/5/2023 Achiever Published Online and Mailed to Subscribers
- 2/20/2023 Deadline for submission of material for the Achiever
- MARCH Women's History Month**
- TBD Equal Pay Day**
- TBD Equal Pay Day Recognition - Unhappy Hour Virtual Meeting**
- TBD Virtual Walk/Run for Education - Fundraising Event**
- TBD Combined Spring Regional Meeting - Online**
- TBD Day on the Hill Recognition**
- 3/5/2023 Achiever Published Online and Mailed to Subscribers
- 3/20/2023 Deadline for submission of material for the Achiever
- 4/5/2023 Achiever Published Online and Mailed to Subscribers
- 4/20/2023 Deadline for submission of material for the Achiever
- 4/30/2023 ALT-YC Scholarship Entry Deadline
- 4/30/2023 Annual Membership Dues Payment Deadline -
For Membership Awards Consideration
- TBD Convention Reports Due**
- 5/5/2023 Achiever Published Online and Mailed to Subscribers
- 5/15/2023 All Reports for Convention due (State Officer,
Committees, Local President Reports)
- 5/20/2023 Deadline for submission of material for the Achiever
- 6/3/2023 Convention Meeting (s)

